

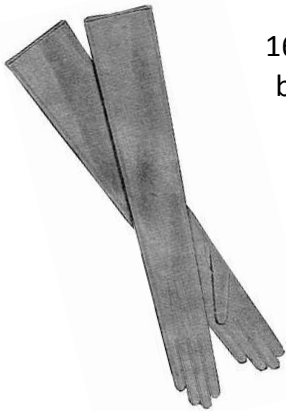
The Princess Silhouette is Important for Winter

By Judy Lewis

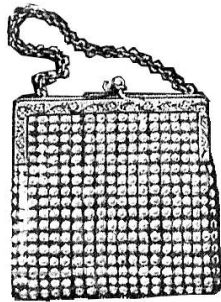
For all the ladies, including myself, who do not find the 1928 dresses, with wide girdles around the hips or belted around the hipline, flattering to their figure, *Delineator*, October 1928 featured the princess silhouette evening gown. The dress was a Butterick pattern #2257.

It outlines the figure and flares outward at the hem; it has the deep U décolletage in front and a deeper V in back and features a huge bow at the side. The hem in back flows to ankle length. This silhouette is very new and extremely smart.

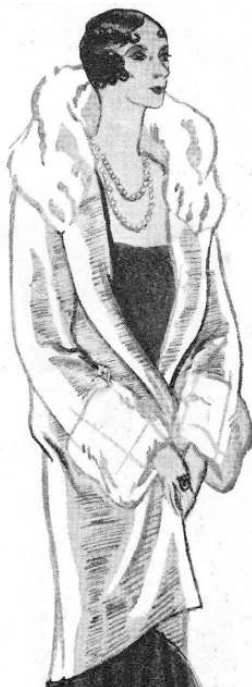
The model shows spike heel pumps and a long single strand necklace; although you can't see them she would be wearing matching earrings. To complete the outfit, above the elbow evening gloves, evening bag and wrap would be appropriate.



16 to 22 button silk gloves with 3 gores. The button count is not about how many buttons it has but how long the gloves are.



Evening bag of white or black silk moiré with high grade imitation diamonds. *Sears S/S 1928*



This evening wrap, Butterick pattern #2210 also featured in *Delineator*, October 1928, was made of metal cloth and featured a blue fox mushroom collar and cuffs. If the wrap were made of ivory velvet, sable would have been tremendously smart.

